

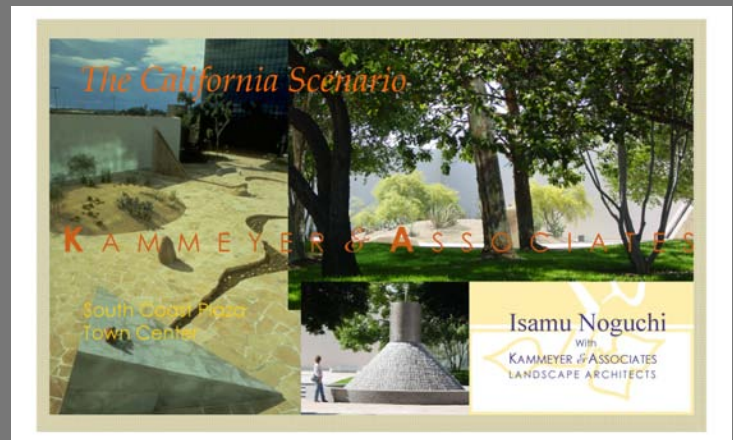
Interpretive Gardens Developing a “Sense of Place”



Interpretive Gardens Developing a “Sense of Place”

The California Scenario / Costa Mesa California

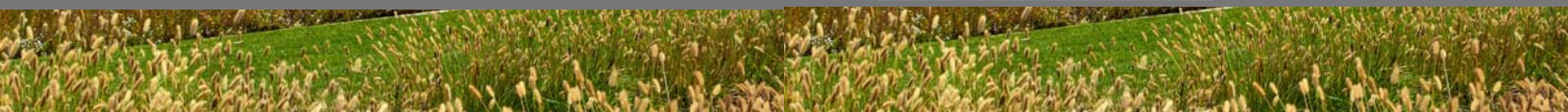
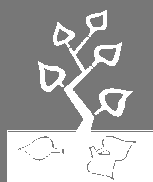
In 1980 Henry Segerstrom commissioned world renowned Sculpture Isamu Noguchi and Landscape Architect, Ken Kammeyer to create the California Scenario at his South Coast Plaza, in Costa Mesa, California.



The American Society of Landscape Architects recognized this site as a National Landmark for outstanding Landscape Architecture & honored Ken K. Kammeyer, CLARB with their Centennial Medallion as a century site “1899-1999 commemorating one of this nation’s landscapes of memory that contributes to the great beauty of California, inspires and educates its Citizens and enriches their lives”.

Telephone: (951)371-2444
Facsimile: (951)371-4719
Email: mail@kammeyer.com
Web: www.kammeyer.com

2837 Kellogg Avenue
Corona, CA 92881

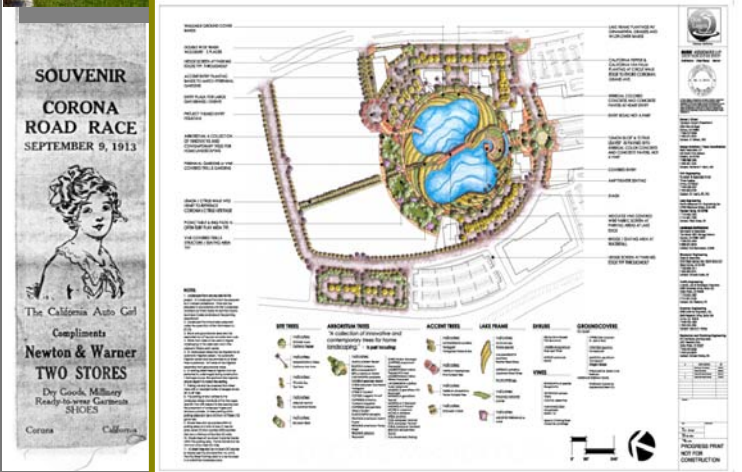


Interpretive Gardens Developing a “Sense of Place”

The Heart Lakes / Corona, California

In 2003 Ali Sahabi president of SE Corporation commissioned Architect Norberto Nardi and Landscape Architect Ken K. Kammeyer to create the centerpiece of the Dos Lagos, live work and play development in the western portion of California’s Temescal Canyon.

The master plan for the Dos Lagos Heart Lakes was inspired in part by Corona’s “Historic Grand Blvd”. The design is framed with a symbolic circular walkway that is lined with California Pepper and Palm trees. An outdoor amphitheater is located by the Lakes providing an elegant backdrop for performances. Spanning the lakes is a bamboo arbor designed by renowned Architect Norberto Nardi. The pathway it contains looks out over the lakes and provides hidden views of the sunshine rays’ water wise flower garden. Extending from the garden is a ‘Lemon Grove’ and ‘Citrus Walkway’, symbolic of Corona’s “Lemon Capital of the World” heritage. Demonstration of innovative low flow/drip irrigation systems throughout the landscape is a prime example of sustainable design.



Interpretive Gardens Developing a “Sense of Place”

Navajo Nation Veterans Memorial

Cradled in the stone of the Window Rock is the Navajo Nation’s ultimate tribute to all the brave warriors, past and present, who served this land to protect the ways, of the Navajo people.

...The circle is the unending strength of our people. It is the shape of our Hogan. In the center of the great circle, is a block of native stone and it is on fire. They tell me that it will never go out. It represents the light of the Spirit...

